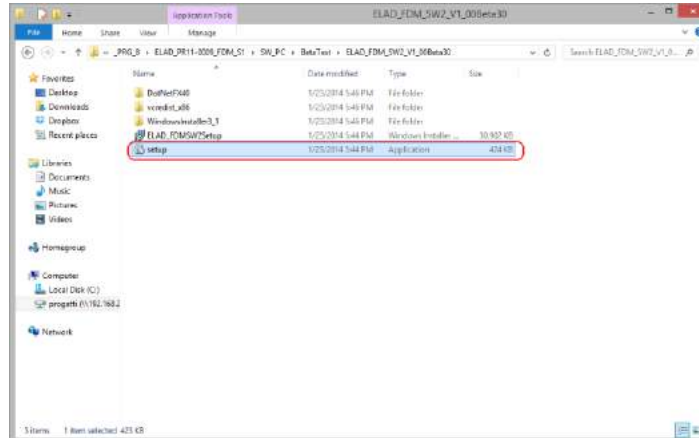


8 Software & Driver Installation

8.1 Software installation

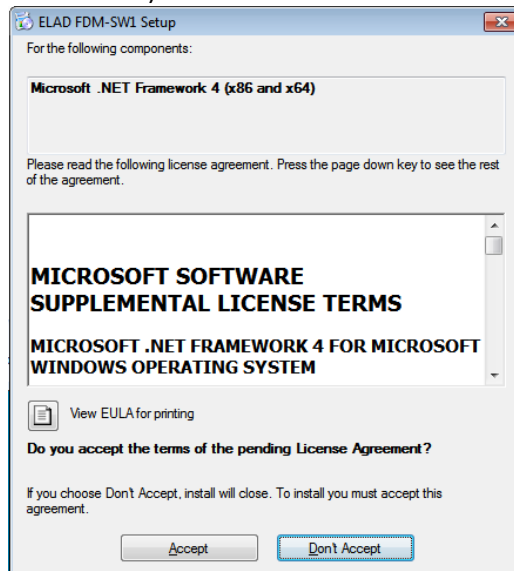
8.1.1 First-time install in Windows 8 and Windows 7

Double-click the file “setup.exe” in the provided USB stick.

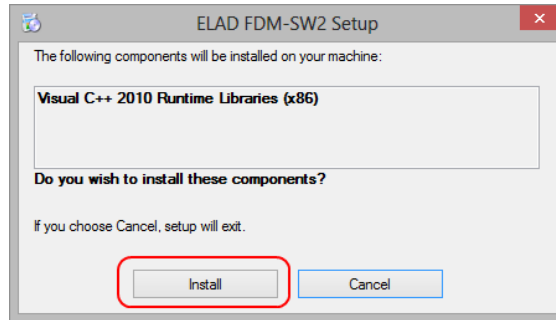


The windows installer first installs the prerequisites:

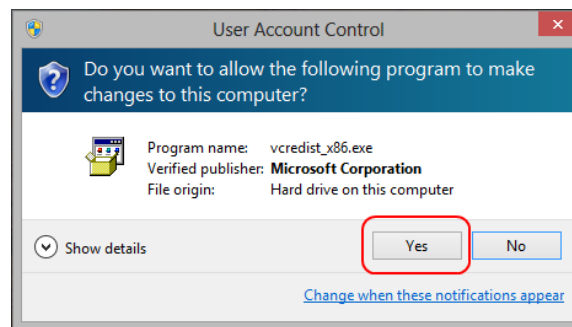
- Microsoft VC++ 2010 Runtime libraries
 - Microsoft .NET Framework 4.0 (Only for Windows 7)
- and then the FDM-SW2 software.
- Click on “Accept” (Only for Windows 7)



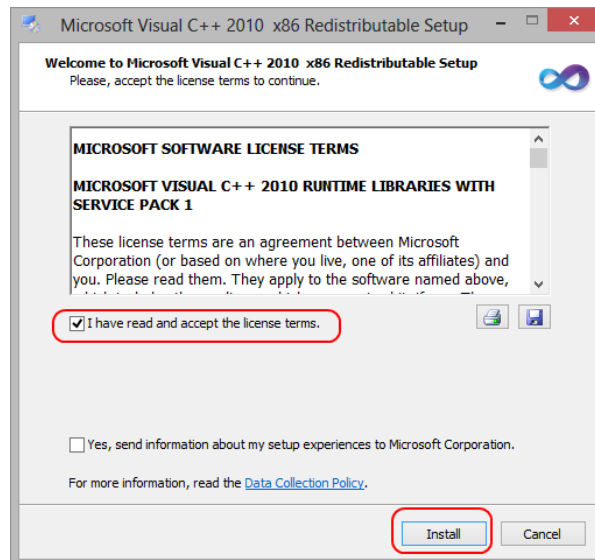
Click on “Install”



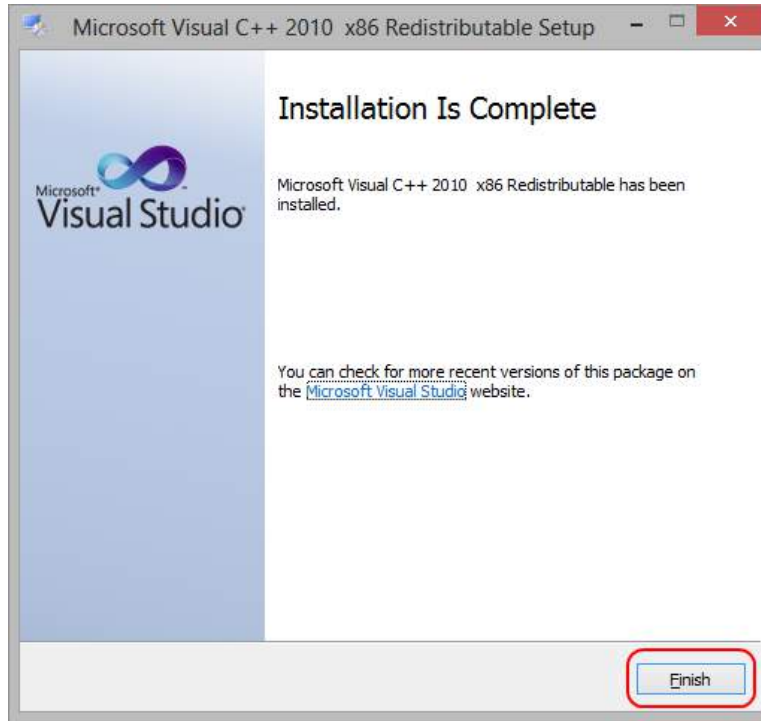
Click on “Yes”



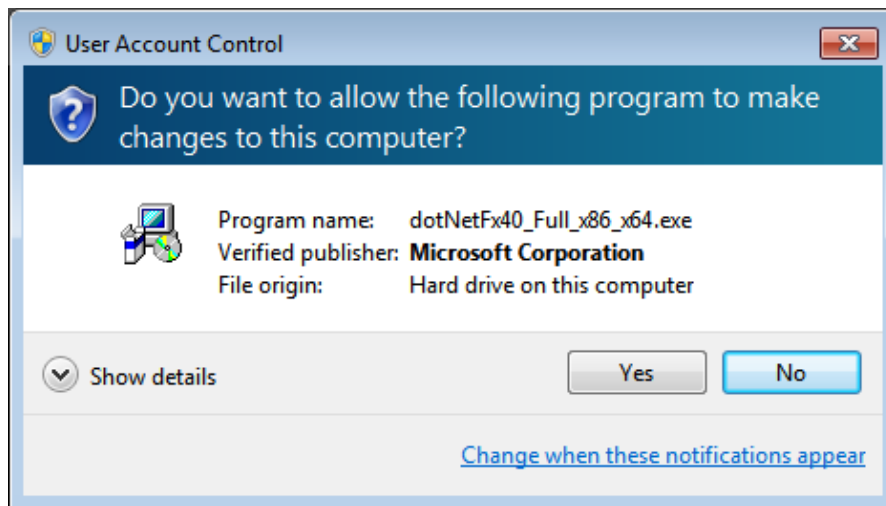
Click on Install



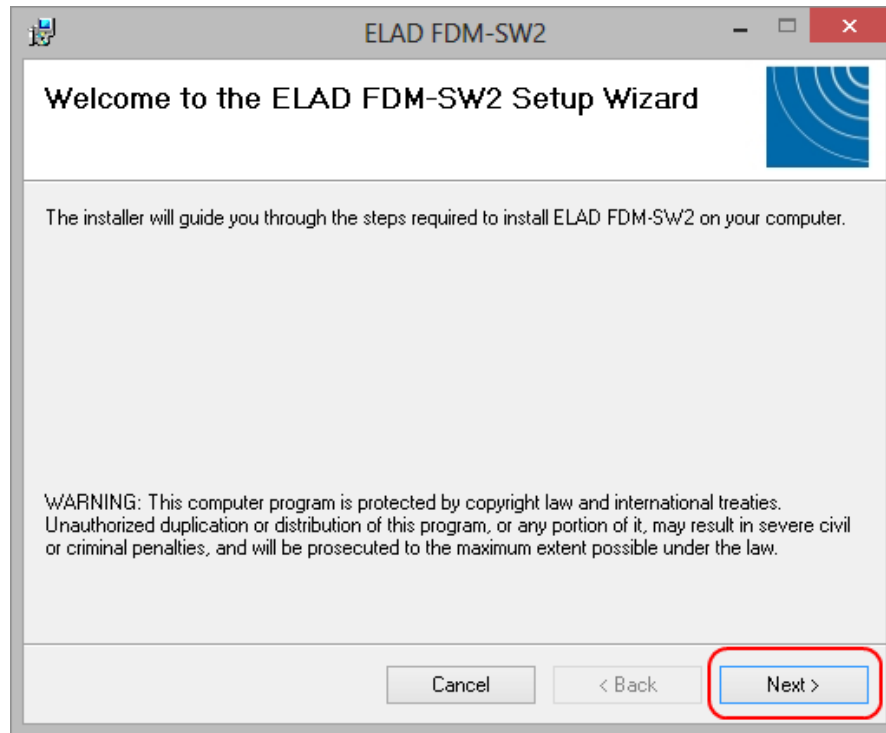
Microsoft Visual C++ 2010 x86 Redistributable installation is complete, click on “Finish”



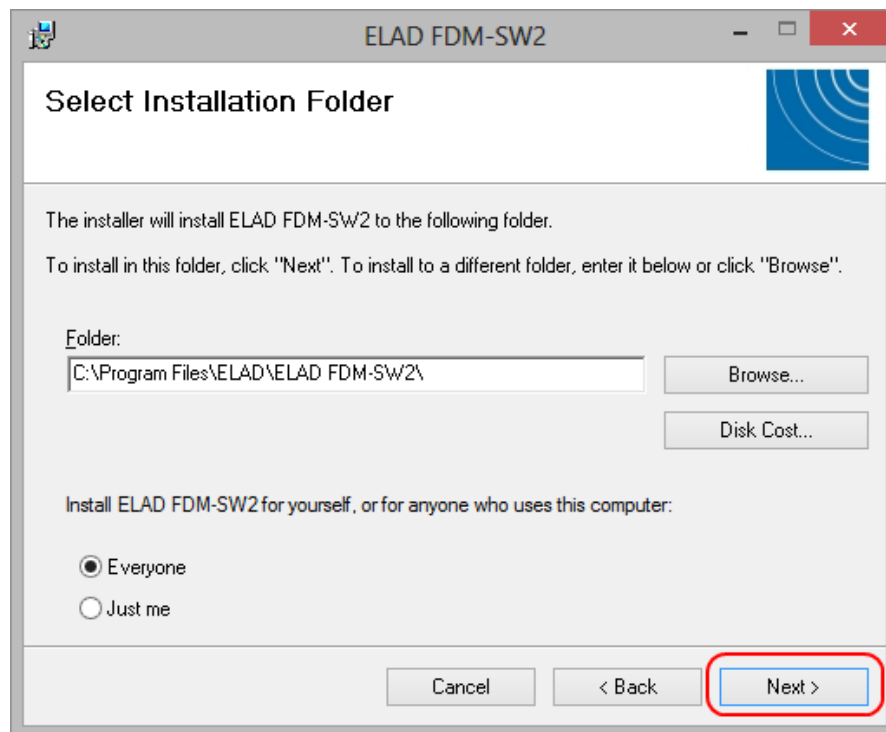
Click on “Yes” to start the installation of the .Net Framework 4.0 (Only for Windows 7)



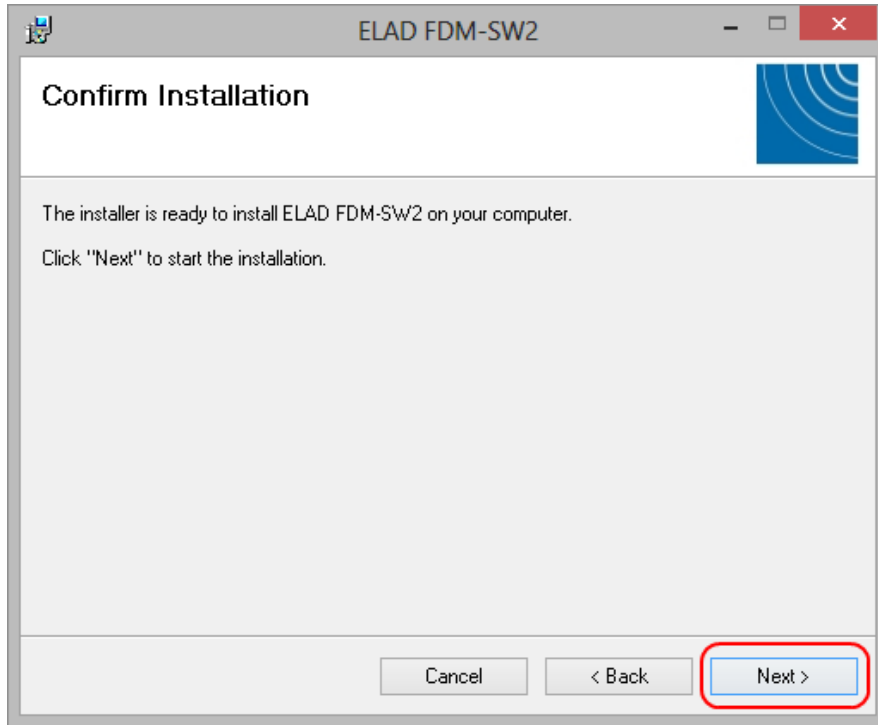
Click to “Next” to start the FDM-SW2 software installation



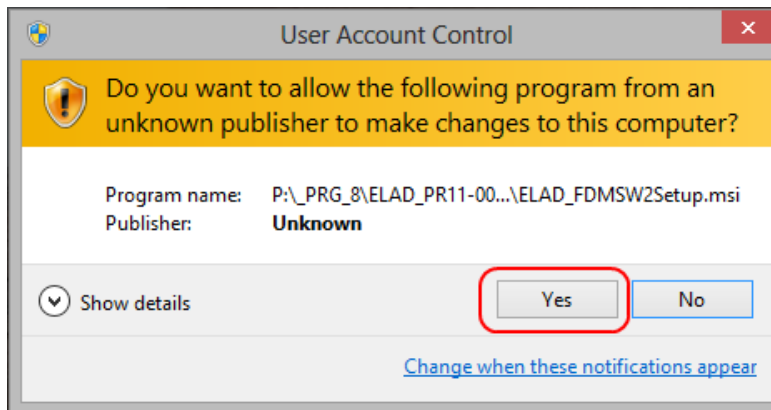
Chose the installation folder, then click on “Next”



Click on “Next”

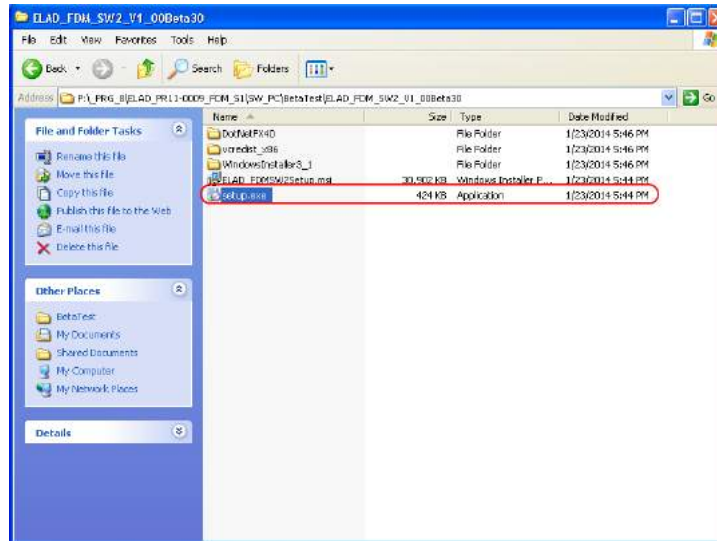


Click on “Yes”

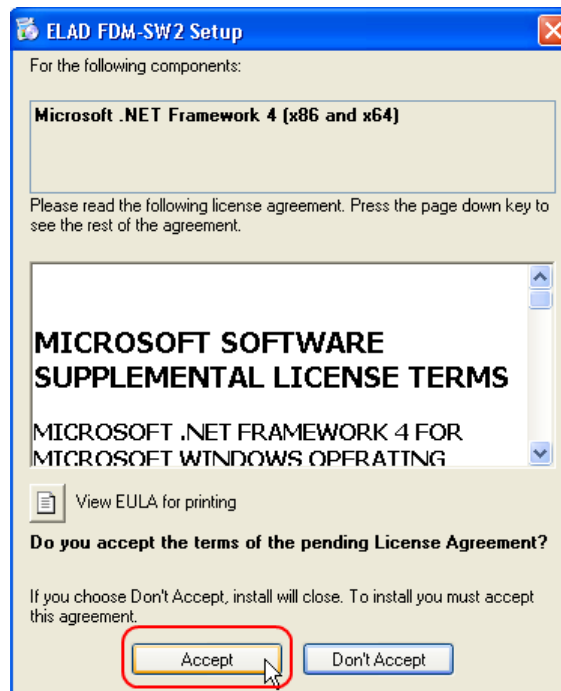


8.1.2 First-time install in Windows XP

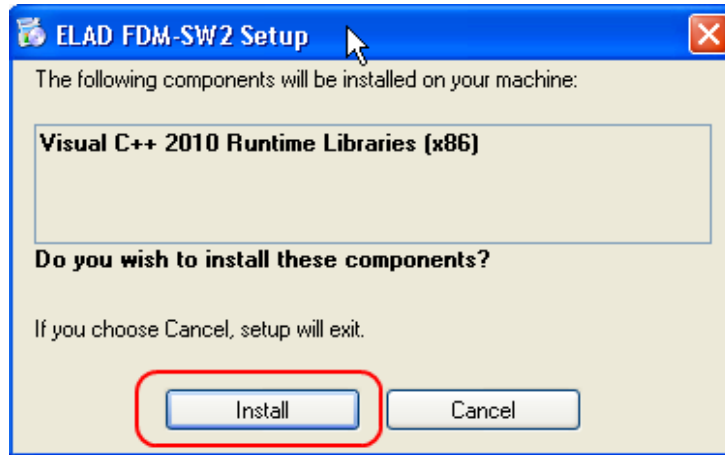
Double-click the file “setup.exe” in the provided USB stick.



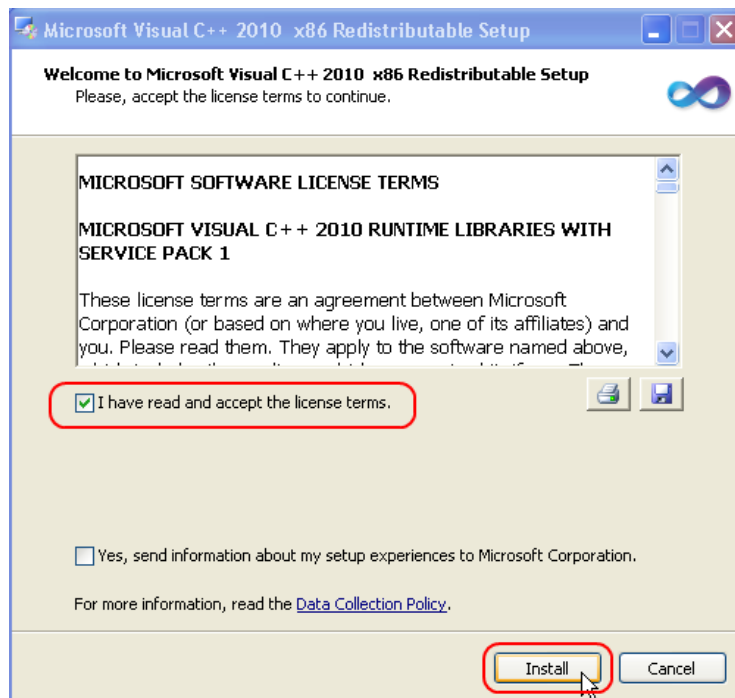
Click on “Accept”



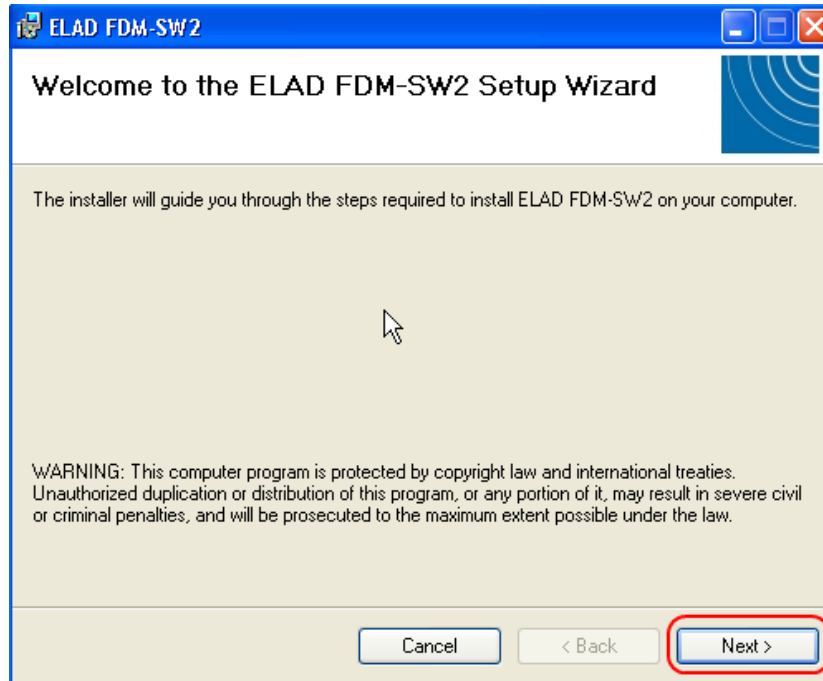
Click on “Install”



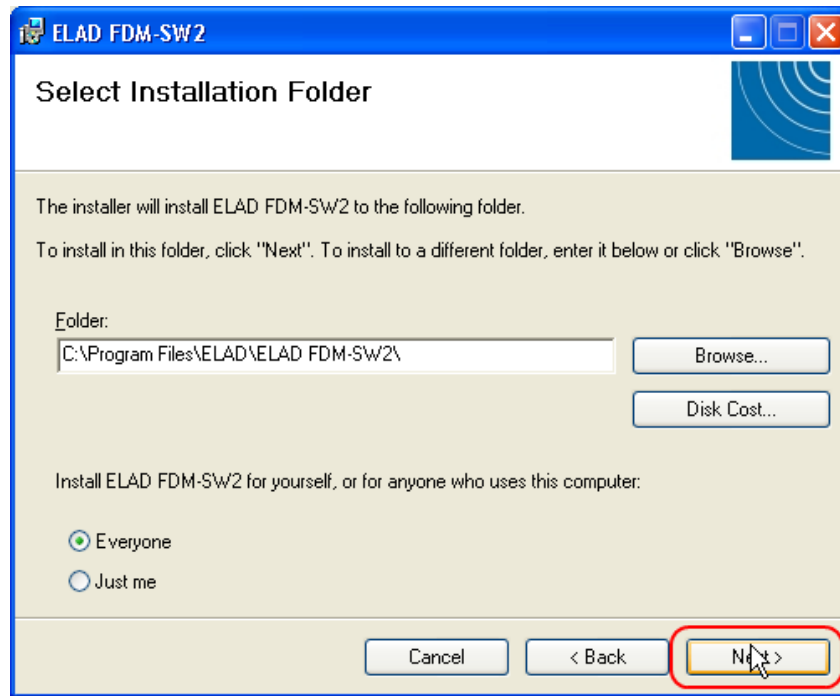
Click on “Install”



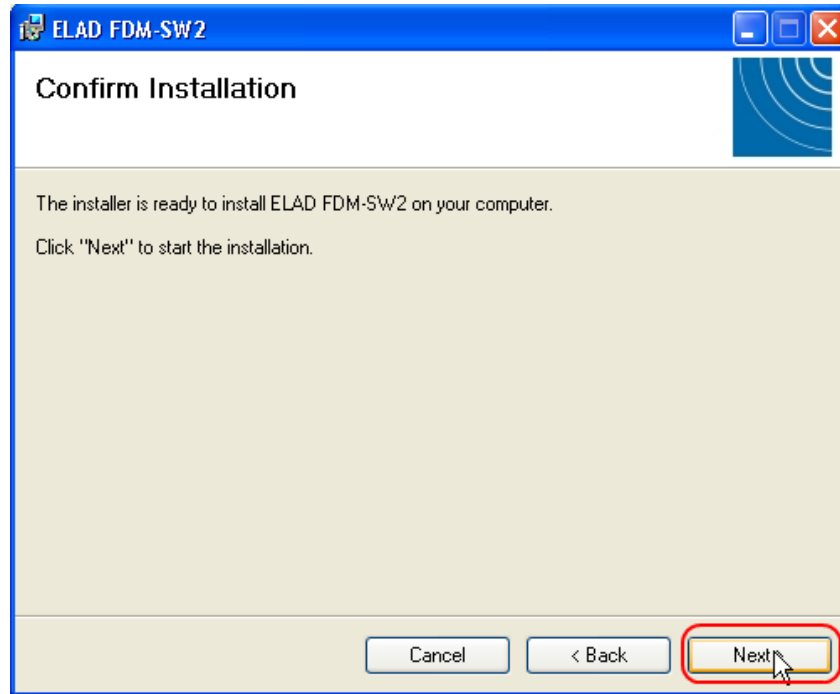
Click on Next to install the FDM-SW2 software



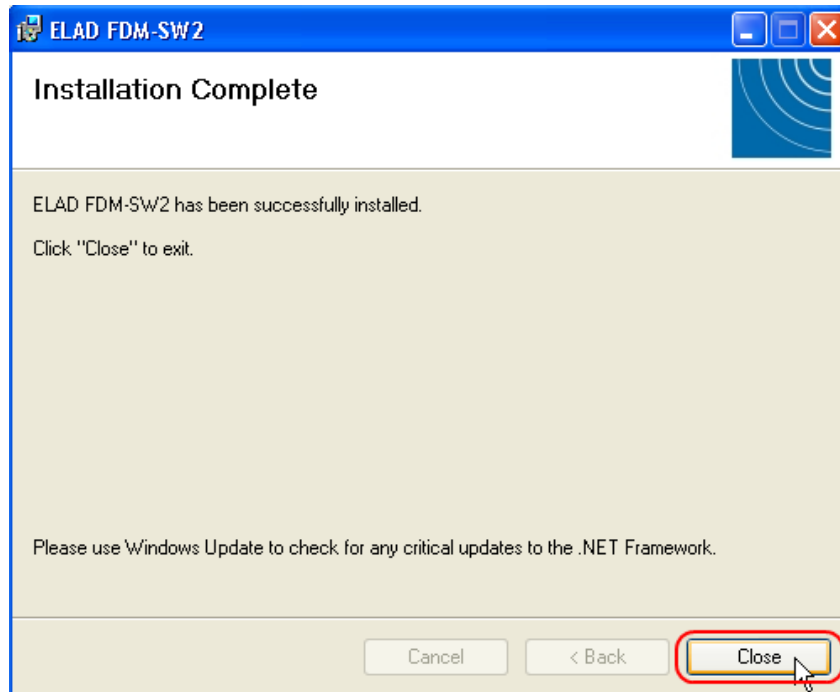
Select the installation folder, then click on "Next"



Click on "Next"



The FDM-SW2 Software installation is completed



8.1.3 Update an existing software version

Double click on file ELAD_FDM_SW2_V_x.xx.msi included in the update and follow the instructions.

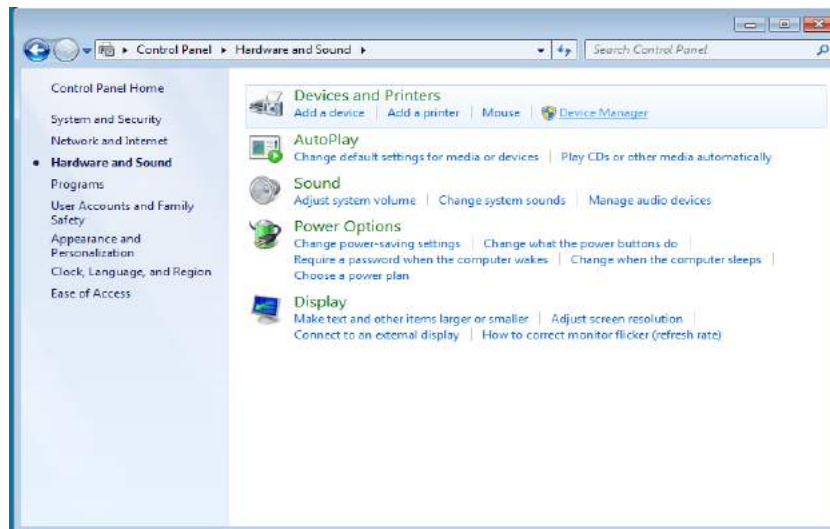
8.2 USB driver

8.2.1 USB driver installation in Windows 8 and Windows 7

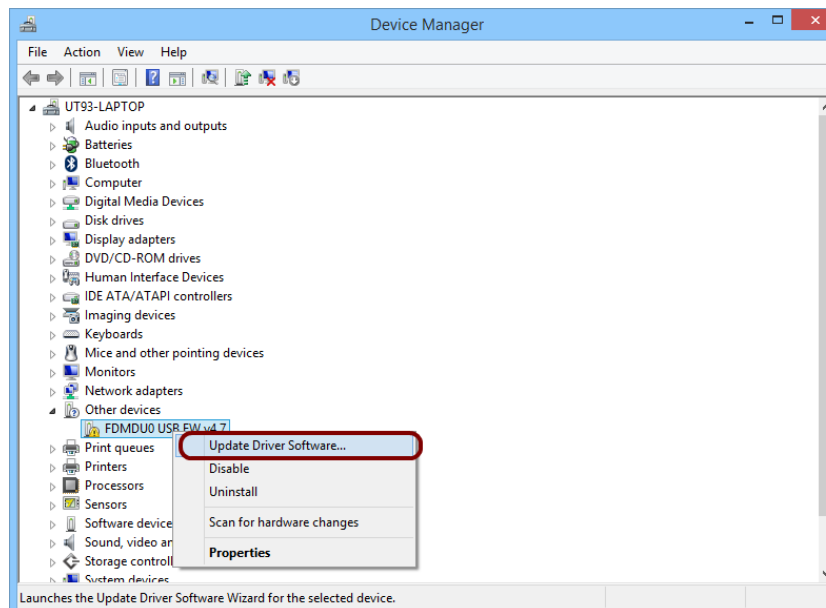
8.2.1.1 First driver installation

To install ELAD FDM-DUO driver, connect FDM-DUO USB RX port to a USB 2.0 socket on PC end power on the device. When Windows detects the new hardware, follow the steps listed below to install driver correctly:

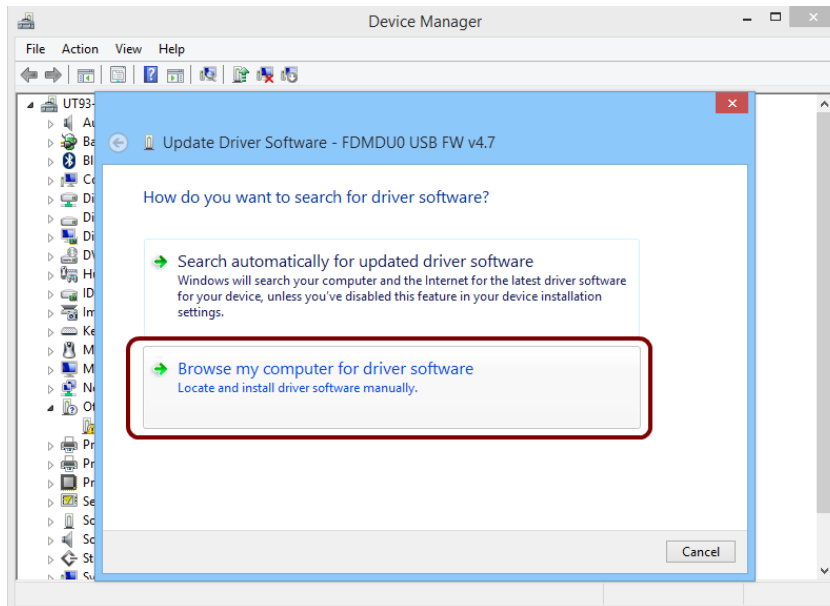
Open **Control Panel** from **Start** menu, select “System” and “Device Manager”. Expand “Other Devices” node: FDM-DUO.



Select FDM-DUO, right click on it and execute “Update driver software”.



When Windows starts the installation procedure, select the option “Browse my computer for driver software” (the second option).



In the next dialog-box, insert the driver folder location using “Browse” button and check the option “Include subfolders”. In this way manual driver search is enabled

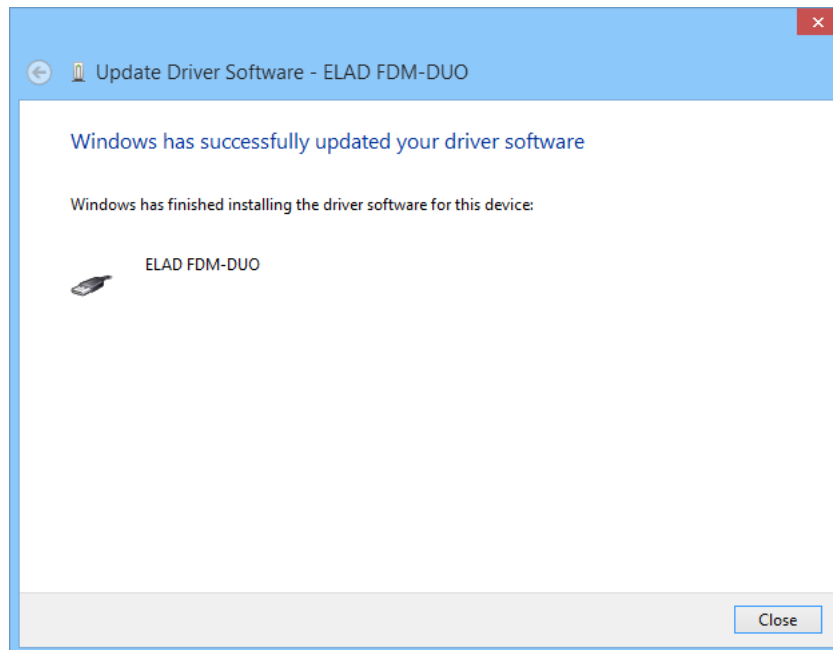
For 32 bit system select the folder: **C:\Program Files\ELAD\ELAD FDM-SW2\ELAD_FDM_Driver**

For 64 bit system select the folder: **C:\Program Files (x86)\ ELAD\ELAD FDM-SW2\ELAD_FDM_Driver**
Then click “Next”.



Click Install.

Let the hardware installation automatically completes and, at the procedure ending, click on “Close”; then disconnect and connect FDM-DUO device on the same USB socket.

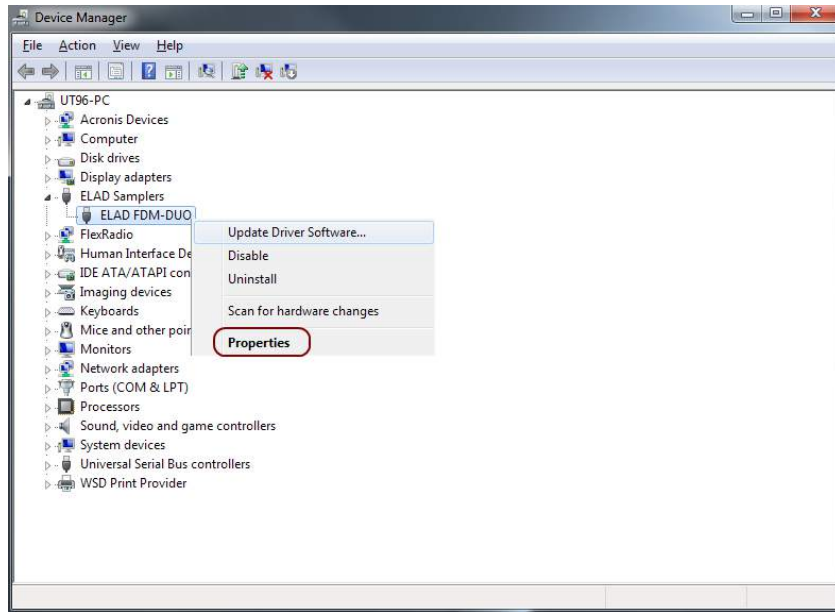


Now ELAD FDM-DUO USB driver is installed on your PC.

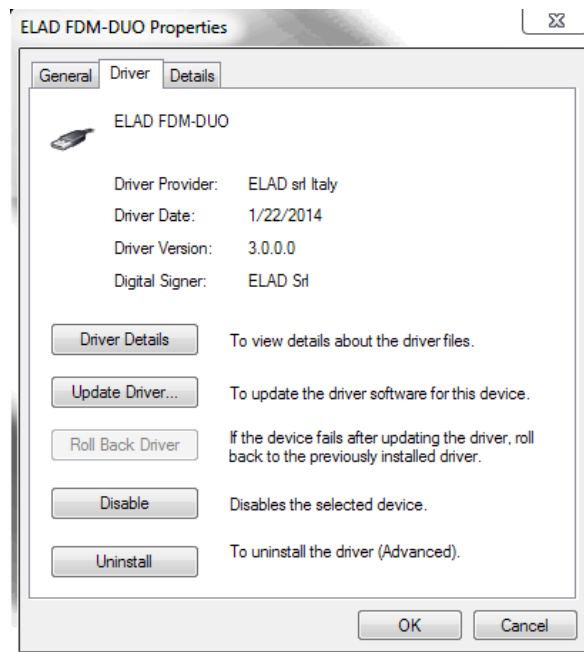
8.2.1.1 Driver installation verify

To verify FDM-DUO driver current version, connect the device to USB socket (where the device driver is already installed) and power on the device. Then open **Control Panel** from **Start** menu. Click on “System” and select “Device Manager”.

Expanding “ELAD Samplers” node, right click on “ELAD FDM-DUO” and select “Properties”.



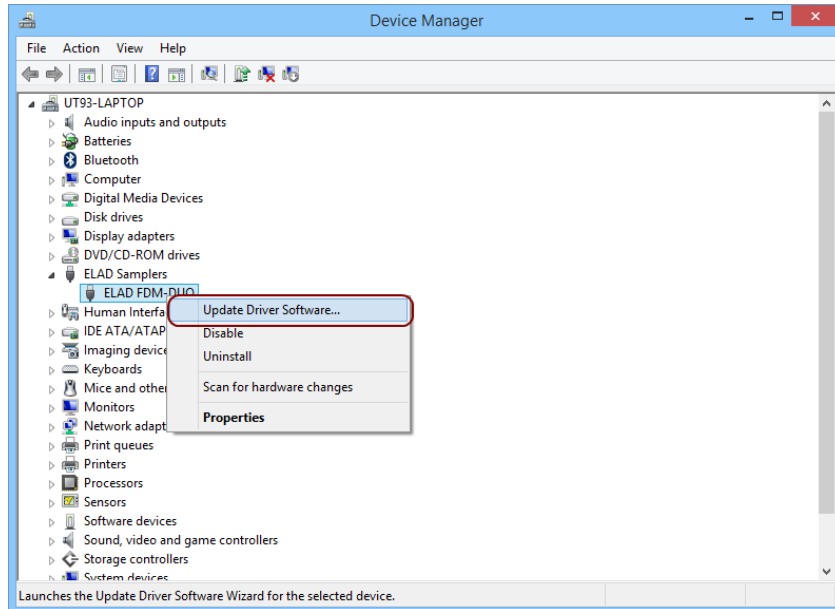
When dialog box opens, select “Driver” label: you must read provider name, current driver release date and current driver version. The figure shows an old FDM- DUO driver version.



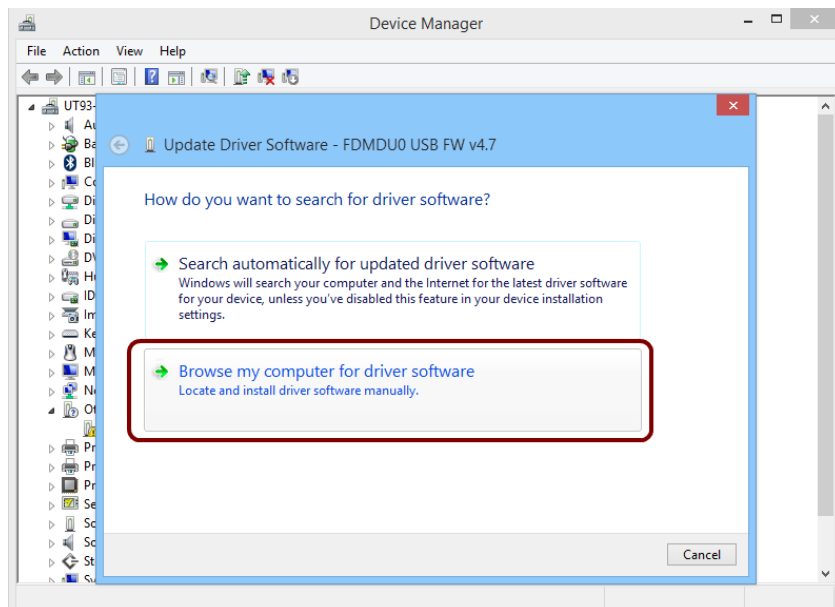
8.2.1.2 Manual driver update

To update FDM-DUO driver, connect the device to USB RX socket (where the device driver is already installed) and power on the device. Then open **Control Panel** from **Start** menu. Click on “System” and select “Device Manager”.

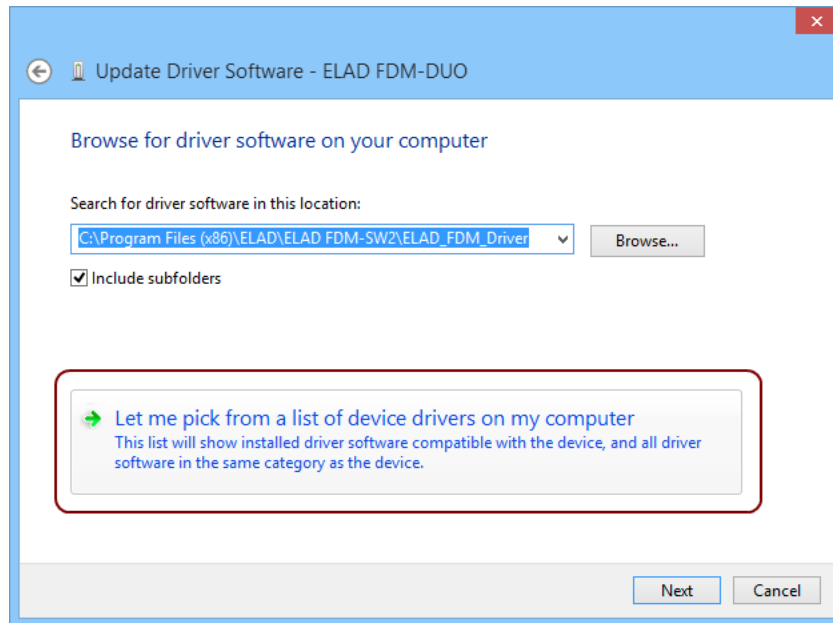
Under “ELAD samplers” list select “ELAD FDM-DUO”, right click on it and execute “Update driver”.



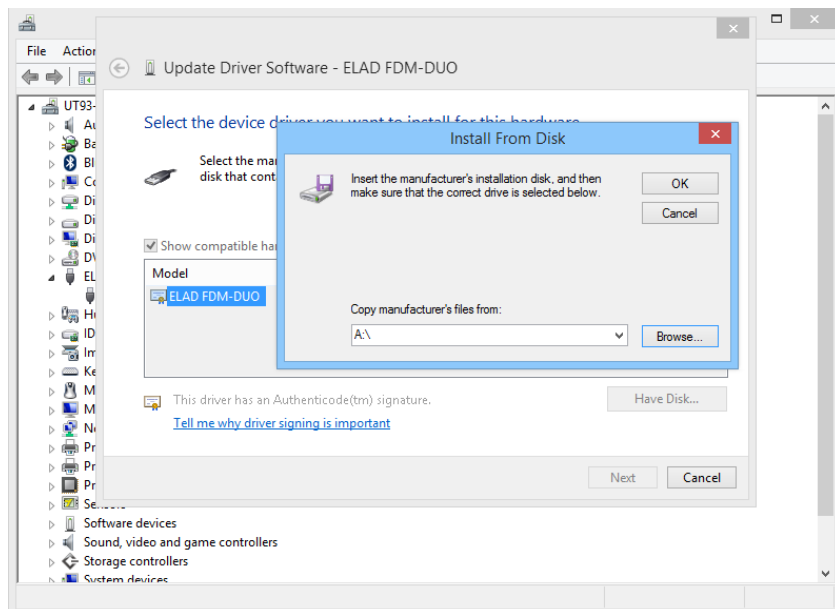
When Windows starts the installation procedure, select the last option “Browse my computer for driver software”.



In the next dialog-box, disable the option “Include subfolders” and choose “Let me pick from a list of device drivers on my computer”. Don’t click “Next”.

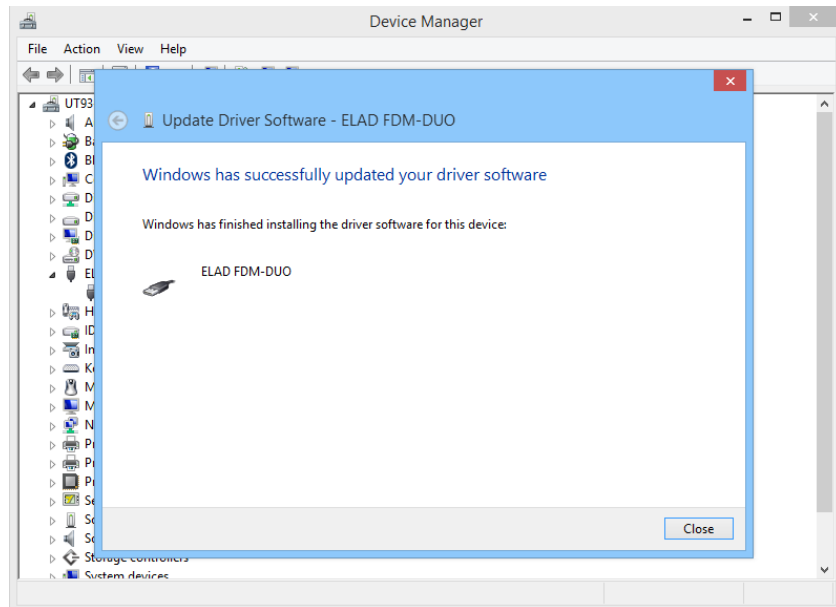


Verify that “Show compatible hardware” option is checked and ELAD FDM-DUO is selected: then click on “Have a Disk”. In this way the manual driver update is enabled. Don’t click “Next”.

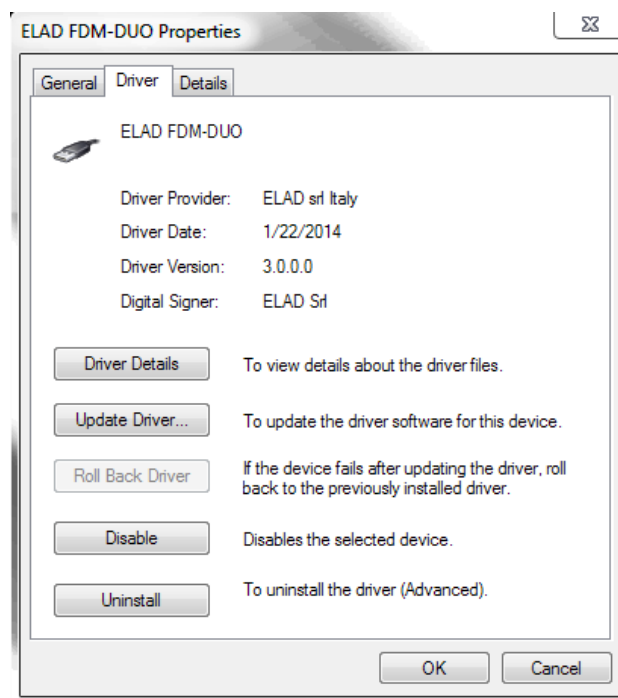


Click on “Browse” and search for FDM-DUO driver update folder location; then open winusb_fmgsampler.inf file. Click “OK” and then “Next”.

Let the hardware installation automatically completes and, at the procedure ending, click on “Close”; then disconnect and connect FDM-DUO device on the same USB socket.



To verify that a correct update is done, enter “Device Manager” in Control Panel; under “ELAD samplers” label select ELAD FDM-DUO driver (see sub-chapter [Driver installation verify in Windows 8 and Windows 7](#)): right click on it and choose “Properties”: select “Driver” label to visualize the last driver version (an example is depicted in figure below).



8.2.2 USB driver installation in Windows XP

8.2.2.1 First driver installation

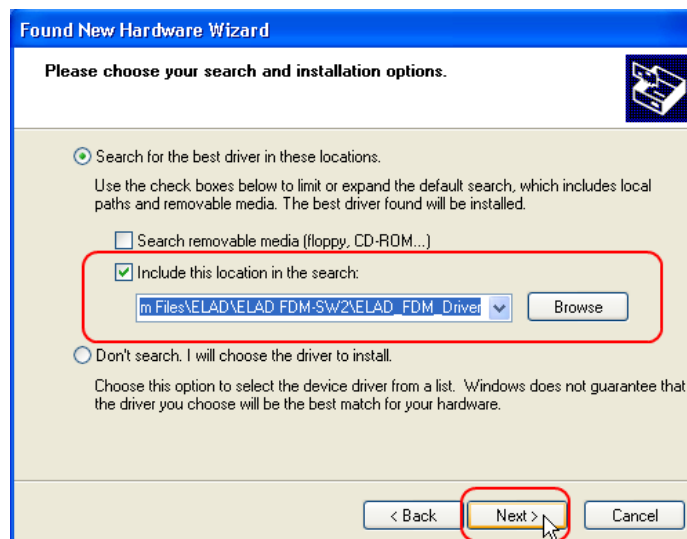
To install ELAD FDM-DUO driver, connect FDM-DUO USB RX port to a USB 2.0 socket on PC and power on the device. Windows XP detects the new hardware and starts the hardware installation wizard. Then, next steps to install FDM-DUO driver are listed below:

At the first dialog box, select the last option “No, not this time” and “Next”.



Select “Install from a list or specific location (Advanced)” and “Next”.

In the next dialog-box, check the options “Search for the best driver in these location” and “Include this location in the search” to enable manual driver search. Clicking on “Browse”, select the path where the driver folder is located: **Local Drive (C:) \Programs\ELAD\ELAD FDM-SW2\ELAD_FDM_Driver**. Then click “Next”.



Let the hardware installation automatically completes and click on “Finish”; then disconnect and connect FDM- DUO device on the same USB socket.

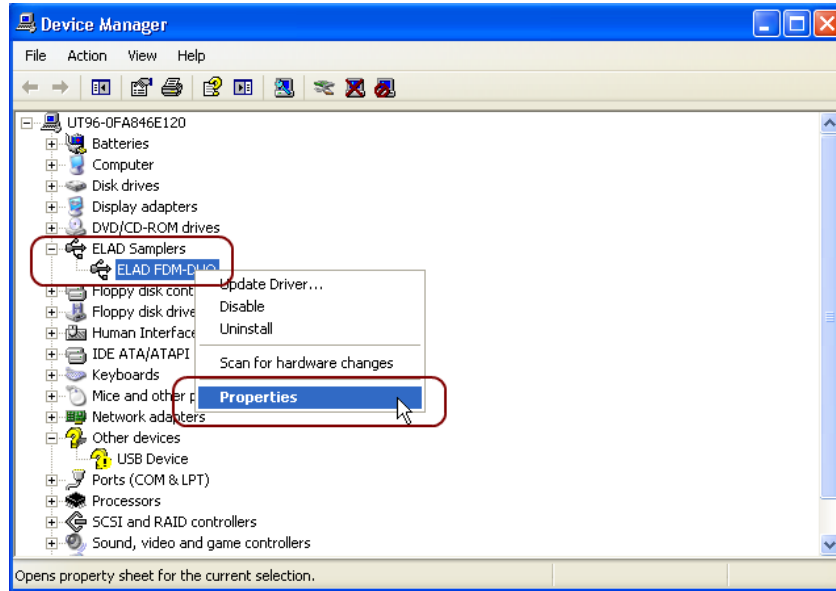


Now ELAD FDM- DUO driver is installed on your PC.

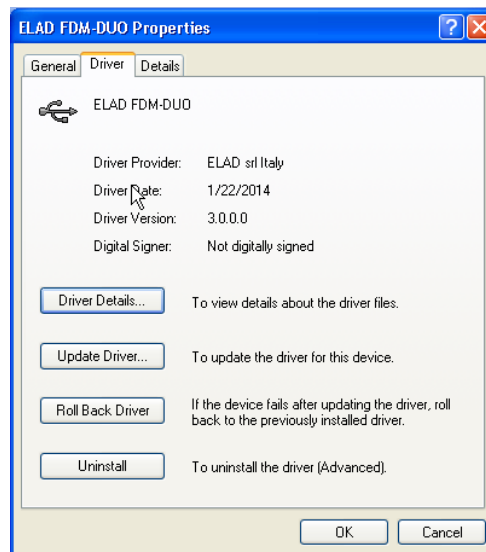
8.2.2.2 Driver installation verify

To verify FDM-DUO driver current version, connect the device to USB socket (where the device driver is already installed) and open **Control Panel** from **Start** menu. Click on “System” and select “Device Manager” under “Hardware” label.

Expanding “ELAD Samplers” node, right click on “ELAD FDM-DUO” and select “Properties”.



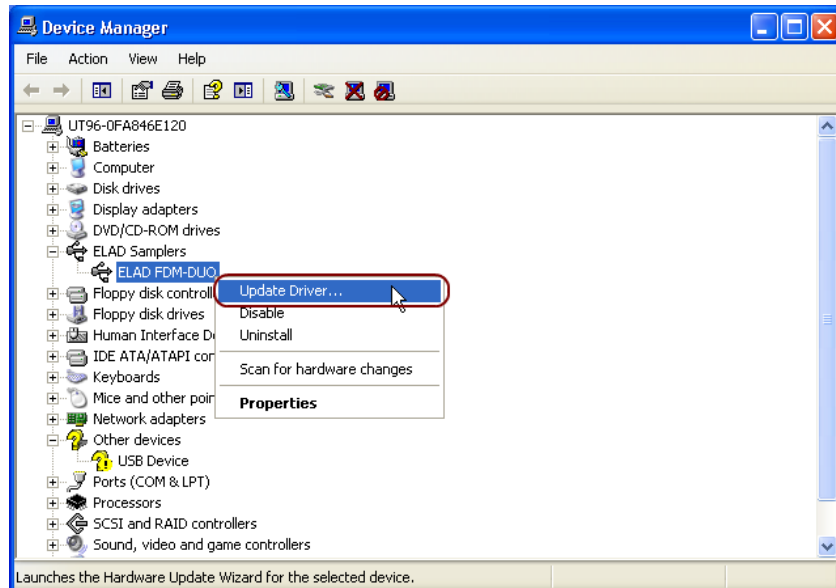
When dialog box opens, select “Driver” label: you must read provider name, current driver release date and current driver version. The old ELAD FDM-DUO driver version is shown in figure below as example.



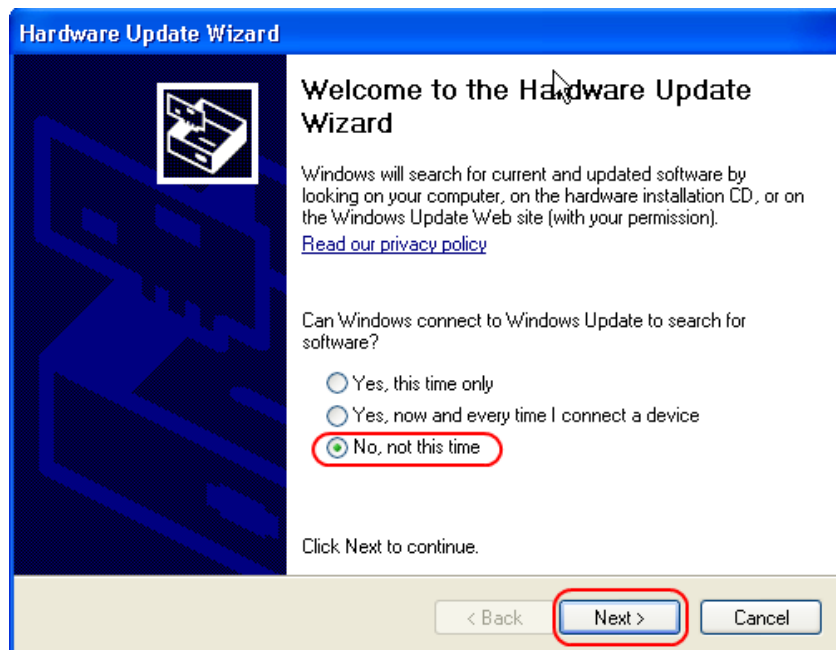
8.2.2.3 Manual driver update

To update FDM-DUO driver, connect the device to USB socket (where the device driver is already installed) and power on the device. Then open **Control Panel** from **Start** menu. Click on “System” and select “Device Manager” under “Hardware” label.

Select “ELAD FDM-DUO” from “ELAD Samplers” list, right click on it and execute “Update driver ”

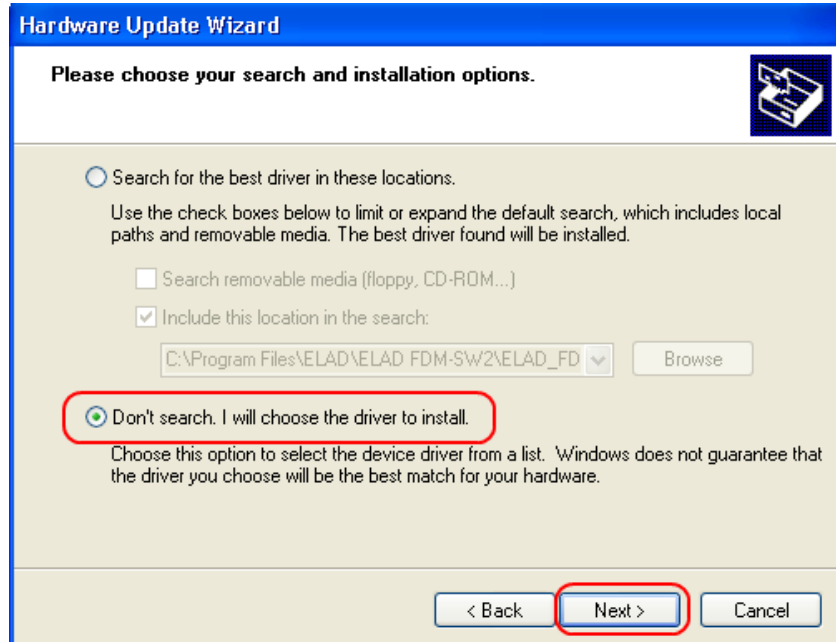


Now Windows XP launches the hardware update wizard: select the last option “No, not this time” and “Next”.

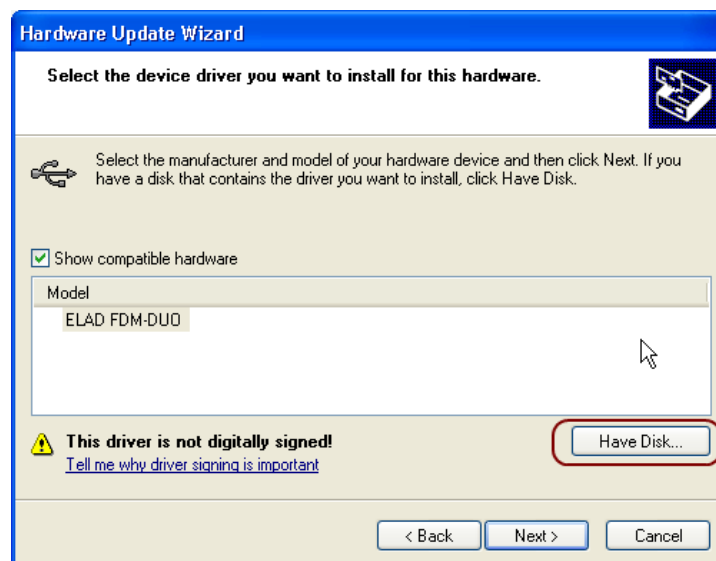


At next step select “Install from a list or specific location (Advanced)” and “Next”.

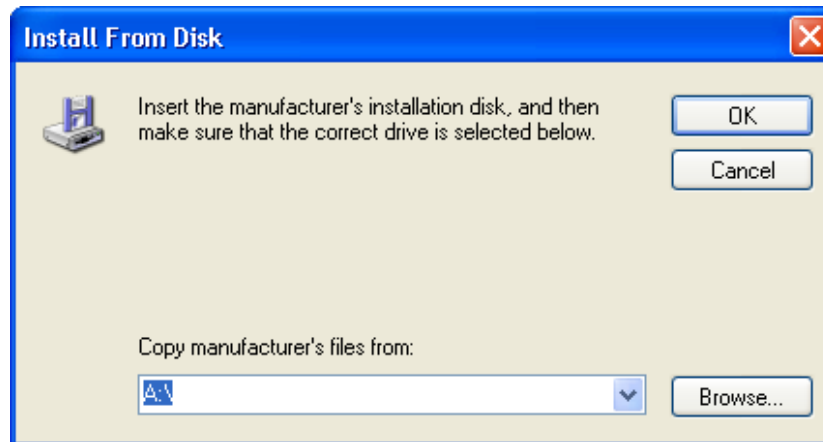
Then, disable all check-boxes that the system automatically sets and choose the last option for manual driver update, as depicted in figure. Select “Next”.



Verify that “Show compatible hardware” option is checked and ELAD FDM-DUO is selected: then click on “Have a Disk”. Don’t click “Next”.

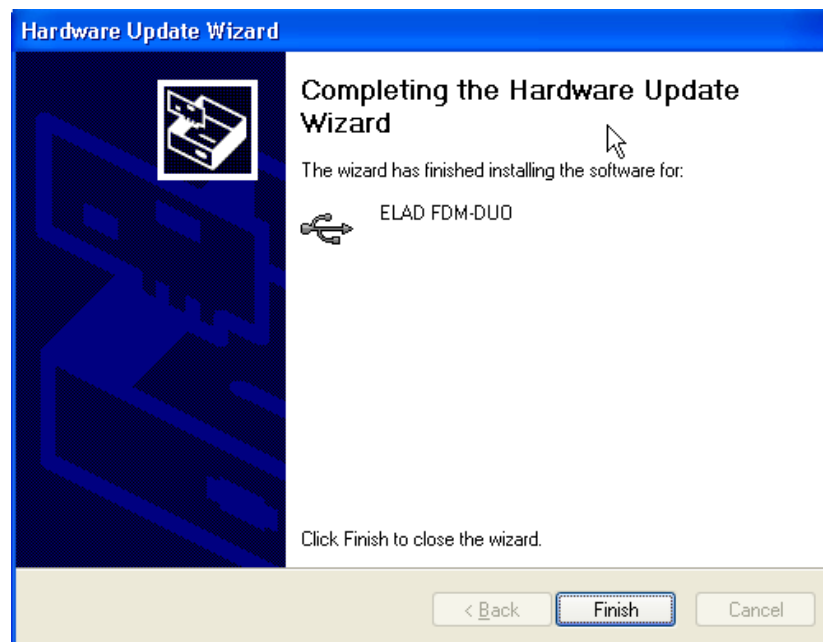


Click on “Browse” and search for the FDM-DUO driver update folder location; then open `winusb_fdmsampler.inf` file, as depicted in figure. Click “OK” and then “Next”.



Now driver update starts: at next dialog box select “Continue Anyway” and ignore the warning.

Let the hardware update automatically completes and, at the procedure ending, click on “Finish”; then disconnect e connect FDM-DUO device on the same USB socket.



To verify that a correct update is done, enter “Device Manager” from **Control Panel**; under “ELAD Samplers” list, select ELAD FDM-DUO driver (see chapter [Driver installation verify in Windows Xp](#)) right click on it and choose “Properties”. Select “Driver” label to visualize the last driver version (an example is depicted in figure below).

